

# HURRICANE PREPAREDNESS TIPS



## IMPORTANT CONTACTS

### **Mrs. Karen Best – Chief Shelter Warden**

Chief Education Officer  
Ministry of Education, Science, Technology and Innovation  
Elsie Payne Complex  
Constitution Road,  
St. Michael  
Telephone #: 430-2709

### **Mrs. Joy Adamson – Deputy Chief Shelter Warden**

Deputy Chief Education Officer  
Ministry of Education, Science, Technology and Innovation  
Elsie Payne Complex  
Constitution Road,  
St. Michael  
Telephone #: 535-0613

### **Dr. Roderick Rudder – Deputy Chief Shelter Warden**

Ministry of Education, Science, Technology and Innovation  
Elsie Payne Complex  
Constitution Road,  
St. Michael  
Telephone #: 535-0614

### **Ms. Kerry Hinds**

Director  
Department of Emergency Management (DEM)  
Telephone #: 438-7575  
Fax #: 421-8612

### **DEM Secretariat**

#30 Warrens Industrial Park,  
St. Michael  
Telephone #: 438-7575; 421-8768; 421-6736; 421-7846; 421-2119  
Police Department  
Headquarters Telephone #: 430-7100  
Emergency Number: 211

**Barbados Fire Service**

GPO Building Cheapside  
Bridgetown  
Headquarters Telephone #: 535-7800  
Emergency #: 311

**Emergency Ambulance Service**

Queen Elizabeth Hospital  
Martindale's Road,  
St. Michael  
Telephone #: 436-6450  
Emergency #: 511

**Barbados Defence Force**

St. Ann's Fort  
Garrison  
St. Michael  
Telephone #: 536-2500



## LIST OF DISTRICT EMERGENCY ORGANISATIONS

| DISTRICT                   | CHAIRPERSON               | TELEPHONE NUMBERS                        |
|----------------------------|---------------------------|--|
| Christ Church West Central | Mr. Charles Legall        | 427-9525 (H)                             |
| Christ Church West         | Mr. Orlando Alleyne       | 427-9525 (H)                             |
| Christ Church South        | Ms. Laura Rudder          | 420-3447 (H); 267-8330(C)                |
| Christ Church East Central | Mr. Collin Rice           | 261-7419 (C)                             |
| St. Andrew                 | Ms. Hyacinth Ramsey       | 422-9030 (H); 261-7419 (C)               |
| St. James Central          | Mr. Selwyn Brooks         | 421-9101 (H); 232-7381 (C)               |
| St. James South            | Mr. Richard Burke         | 624-7879 (H); 827-8570 (C)               |
| St. George South           | Mr. Roger Padmore         | 417-8348 (W); 230-6493 (C)               |
| St. George North           | Mr. Roderick Yard         | 425-2349 (H); 834-5945 (C)               |
| St. John                   | Mr. John Haynes           | 433-5559 (H); 826-5559 (C)               |
| St. Joseph                 | Ms. Heather Walrond       | 433-8927 (H)                             |
| St. Lucy                   | Ms. Rontae Johnson-Annius | 439-8169 (H); 250-8728 (C)               |
| Bridgetown                 | Mr. Samuel Holder         | 831-5990 (C)                             |
| St. Michael South          | Mr. Leonard Headley       | 240-1729 (C)                             |
| St. Michael North West     | Ms. Doriel Gill-Skinner   | 432-5828 (W); 425-6370 (H); 240-8559 (C) |
| St. Michael North          | Mr. John Downes           | 425-4798 (H); 264-0646 (C)               |
| St. Michael West           | Ms. Olethea Prescod       | 426-5522 (H)                             |
| St. Michael South Central  | Mr. Barton Green          | 436-2705 (H); 242-0748 (C)               |
| St. Michael South East     | Ms. Sophia Greaves        | 426-1157 (W); 233-4182 (C)               |
| St. Peter                  | Mr. Dave Hurley           | 430-5129 (W); 243-6009 (C)               |
| St. Philip North           | Ms. Maria Mayers          | 428-8161 (W); 423-9592 (H); 242-8391 (C) |
| St. Philip South           | Mr. Trevor Blenman        | 571-9893 (W); 822-1160 (C)               |
| St. Philip West            | Mr. Ian Smitten           | 227-6000 (W); 228-7855 (H); 245-7606 (C) |
| St. Thomas                 | Ms. Cheryl Padmore        | 417-9135 (W); 241-2016 (C)               |



# HURRICANE SHELTERS

Shelters are grouped into two categories:

Category 1 – Shelters which may be used during a hurricane or other hazard event.

Category 2 – Shelters which may be used if they are still in a reasonable condition after a hazardous event or disaster.

## HURRICANE SHELTER INFORMATION

### CATEGORY 1 SHELTERS

#### CHRIST CHURCH

**Blackman and Gollop Primary School**  
Accommodation: 70 persons  
Potable and Non-Potable Water Available  
Wheelchair Accessible Bathroom: Yes  
Christ Church Foundation  
Accommodation: 75  
Potable and Non-Potable Water Available  
Wheelchair Accessible Bathroom: No  
Gordon Walters Primary  
Accommodation: 40  
Non-Potable Water Available  
Wheelchair Accessible Bathroom: No  
St. Christopher Primary  
Accommodation: 75  
Non-Potable Water Available  
Wheelchair Accessible Bathroom: No

#### ST. PHILIP

**Hilda Skeene Primary**  
Accommodation: 32  
Non-Potable Water Available  
Wheelchair Accessible Bathroom: No  
Six Roads Church of God  
Accommodation: 40  
Wheelchair Accessible Bathroom: No  
Six Roads Seventh Day Adventist  
Accommodation: 22  
Wheelchair Accessible Bathroom: No

#### ST. JAMES

**Gordon Greenidge Primary**  
Accommodation: 50  
Non-Potable Water  
Wheelchair Accessible Bathroom: Yes  
(MINOR REPAIRS)  
Queen's College  
Accommodation: 100  
Non-Potable Water Available  
Wheelchair Accessible Bathroom: No

#### ST. LUCY

**Connell Pentecostal House of Prayer**  
Accommodation: 50  
Water Cooler Available  
Wheelchair Accessible Bathroom: No

#### ST. MICHAEL

**Combermere School**  
Accommodation: 100  
Wheelchair Accessible Bathroom: No  
Elerslie Secondary School  
Accommodation: 55  
Potable and Non-Potable Water Available  
Wheelchair Accessible Bathroom: No

**George Lamming Primary**

Accommodation: 72

Potable Water Available

Wheelchair Accessible Bathroom: No

Black Rock Seventh Day Adventist

Accommodation: 80

Wheelchair Accessible Bathroom: No

Dalkeith Methodist Church

Accommodation: 34

Wheelchair Accessible Bathroom: Yes

**ST. PETER**

**Coleridge and Parry School**

Accommodation: 165

Non-Potable Water

Wheelchair Accessible Bathroom: Yes

Roland Edwards Primary

Accommodation: 35

Water Tank Available

Non-Potable Water Available

Wheelchair Accessible Bathroom: No

**ST. THOMAS**

**Lester Vaughan School**

Accommodation: 115

Wheelchair Accessible Bathroom: No

Hillaby/ Turners Hall

Accommodation: 35

Potable Water Available

Wheelchair Accessible Bathrooms: No

**ST. GEORGE**

**Cuthbert Moore Primary**

Accommodation: 60

Non-Potable Water

Wheelchair Accessible Bathroom: Yes

## CATEGORY 2 SHELTERS

### CHRIST CHURCH

**Milton Lynch Primary**

Accommodation: 55

Non-Potable Water Available

Wheelchair Accessible Bathroom: No

St. Bartholomew Primary

Accommodation: 36

Non-Potable Water Available

Wheelchair Accessible Bathroom: No

**Christ Church Parish Church**

Accommodation: 70

Wheelchair Accessible Bathroom: No

Salvation Army Church (Wotton)

Accommodation: 40

Wheelchair Accessible Bathroom: No

**St. Christopher Church**

Accommodation: 55

Potable and Non-Potable Water Available

Wheelchair Accessible Bathroom: No

St. Matthias Church

Accommodation: 40

Wheelchair Accessible Bathroom: Yes

Cane Vale Seventh Day Adventist Church

Accommodation: 84

Wheelchair Accessible Bathroom: No

Hawthorne Methodist Church

Accommodation: 60

Wheelchair Accessible Bathroom: No

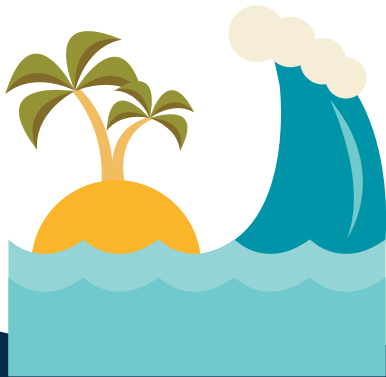
**ST. GEORGE**

**St. George Primary**

Accommodation: 40

Non-Potable Water Available

Wheelchair Accessible Bathroom: No



**Ellerton Primary**

Accommodation: 22

Non-Potable Water Available

Wheelchair Accessible Bathroom: No

**St. George Parish Church**

Accommodation: 80

Wheelchair Accessible Bathroom: No

**ST. JOHN****St. Margaret's Primary**

Accommodation: 40

Potable Water Available

Wheelchair Accessible Bathroom: No

The Lodge School

Accommodation: 30

Potable Water Available

Wheelchair Accessible Bathroom: No

**ST. ANDREW****A. Dacosta Edwards Primary**

Accommodation: 40

Potable Water Available

Wheelchair Accessible Bathroom: No

(MINOR REPAIRS)

**ST. LUCY****Daryll Jordan Secondary**

Accommodation: 150

Non-Potable Water Available

Wheelchair Accessible Bathroom: Yes

**Selah Primary**

Accommodation: 150

Potable and Non-Potable Water Available

Wheelchair Accessible Bathroom: No

St. Lucy Parish Church

Accommodation: 150

Wheelchair Accessible Bathroom: No

**ST. JOSEPH****Grantley Adams Memorial**

Accommodation: 135

Non-Potable Water Available

Wheelchair Accessible Bathroom: No

**St. Bernard Primary**

Accommodation: 37

Potable Water Available

Wheelchair Accessible Bathroom: Yes

**St. Joseph Primary**

Accommodation: 33

Potable Water

Wheelchair Accessible Bathroom: No

**ST. JAMES****West Terrace Primary**

Accommodation: 100

Non-Potable Water Available

Wheelchair Accessible Bathroom: Yes

Good Shepherd Primary

Accommodation: 33

Wheelchair Accessible Bathroom: No

St. Silas Primary

Accommodation: 34

Potable Water Available

Wheelchair Accessible Bathroom: No

**ST. MICHAEL****Barbados Community College**

Accommodation: 178

Wheelchair Accessible Bathroom: No

**St. Paul's Primary**

Accommodation: 24

Wheelchair Accessible Bathroom: No

**Grantley Prescod Memorial**

Accommodation: 60

Potable Water Available

Wheelchair Accessible Bathroom: No

**Harrison College**

Accommodation: 60

Wheelchair Accessible Bathroom: No

**Hindsbury Primary**  
Accommodation: 70  
Non-Potable Water Available  
Wheelchair Accessible Bathroom: No

**Lawrence T. Gay Memorial**  
Accommodation: 33  
Non-Potable Water Available  
Wheelchair Accessible Bathroom: No

**St. Ambrose Primary**  
Accommodation: 70  
Potable Water Available  
Wheelchair Accessible Bathroom: No

**Luther Thorne Primary**  
Accommodation: 100  
Non—Potable Water Available  
Wheelchair Accessible Bathroom: No

**The University of the West Indies**  
Accommodation: 100  
Wheelchair Accessible Bathroom: Yes

**The St. Michael School**  
Accommodation: 105  
Wheelchair Accessible Bathroom: No  
**St. Leonard's Boys' School**  
Accommodation: 55  
Non-Potable Water Available  
Wheelchair Accessible Bathroom: No

**Westbury Primary**  
Accommodation: 100  
Non-Potable Water Available  
Wheelchair Accessible Bathroom: No  
(MINOR REPAIRS)

**Chapman Street Church of God**  
Accommodation: 50  
Wheelchair Accessible Bathroom: No  
**Government Hill Seventh Day Adventist**  
Accommodation: 60  
Wheelchair Accessible Bathroom: No

**St. Barnabas Day Care Centre**  
Accommodation: 46  
Wheelchair Accessible Bathroom: No

**St. Matthew's Church**  
Accommodation: 70  
Wheelchair Accessible Bathroom: No

#### **ST. PETER**

**Alexandra School**  
Accommodation: 100  
Wheelchair Accessible Bathroom: Yes

**All Saints Primary**  
Accommodation: 42  
Non-Potable Water Available  
Wheelchair Accessible Bathroom: No

**St. Philip-the-Less Church**  
Accommodation: 45  
Wheelchair Accessible Bathroom: No

#### **ST. PHILIP**

**Princess Margaret Secondary**  
Accommodation: 60  
Non-Potable Water Available  
Wheelchair Accessible Bathroom: No

**St. Catherine's Primary**  
Accommodation: 40  
Potable Water Available  
Wheelchair Accessible Bathroom: No

**Bayley's Primary**  
Accommodation: 40  
Potable Water Available  
Wheelchair Accessible Bathroom: No

**Reynold Weekes Primary**  
Accommodation: 60  
Potable Water Available  
Wheelchair Accessible Bathroom: No



**Four Square Nazarene Church**

Accommodation: 35

Wheelchair Accessible Bathroom: No

**Gemswick Nazarene Church**

Accommodation: 48

Wheelchair Accessible Bathroom: No

**Ruby Nazarene Church**

Accommodation: 30

Wheelchair Accessible Bathroom: No

**St. Catherine's Church**

Accommodation: 40

Wheelchair Accessible Bathroom: No

**ST. THOMAS**

**Sharon Primary**

Accommodation: 40

Potable Water Available

Wheelchair Accessible Bathroom: No

(MINOR REPAIRS)



## EMERGENCY SHELTERING

One of the realities of emergencies and disasters of all kinds is that people may be forced to leave their homes; firstly, because of the threat of a hazard impact or secondly, their homes may have been destroyed or damaged extensively by the event.

Shelter is a basic human need. In addition to water, food, health and personal care, shelter is crucial to survival in an emergency or disaster. In addition to survival, good shelter promotes the maintenance of health and safeguards the population from the potential negative impacts of exposure to the physical environment. However, emergency shelters are not expected to become permanent homes for evacuated persons.

Shelters are structurally sound buildings, in safe locations that are designated in the planning stages of Disaster Management Programmes to house victims of an emergency or disaster and to provide for their immediate needs. The period of occupation at these facilities is usually a very brief one extending not more than a few days, but may be lengthened depending on the severity of impact on the affected community.

Sheltering in a national emergency shelter should be your last resort. Persons should always make prior arrangements to seek shelter at a family or friend first – it would be much more comfortable. Wherever you go, take provisions with you. However, if you have to evacuate to a public shelter, you should follow the guidelines below:

- Be aware of emergency shelters located in your area. This information can be obtained from the Department of Emergency Management or from your District Emergency Organization (DEO).
- Do not attempt to seek refuge in a shelter unless notified by authorities that it has been officially opened.
- Listen for evacuation advice and leave promptly when advised by authorities to do so.
- Recognize that a public shelter's primary function is to provide refuge, that is, a roof over your head.
- Pets, weapons, alcoholic beverages and narcotics will NOT be allowed in a shelter. Cigarette or cigar smoking will NOT be permitted.

## BEFORE YOU LEAVE HOME

- Be sure your family is well fed before you take them to the home of a friend or to a public shelter.
- Fill as many containers as possible with water and store in refrigerator.
- Fill bathtub and washing machine with water. (You may need this supply when you return.)
- Shut off water and electricity at their main switches. Do not touch any electrical equipment unless it is in a dry area or you are standing on a piece of dry wood with rubber footwear and gloves.
- Shut off valve on propane gas tank. Leave outside and anchor securely.
- Lock windows and doors.
- Have plenty of newspaper for sanitary purposes.
- No pets are allowed in Shelters. If possible, arrange to leave your pets with a friend or release pet inside house. Do not leave any pet outside or tied up during a hurricane. Leave plenty of water. Remove toilet tank lid and raise toilet seat so pet can drink. Brace bathroom door to stay open.

- Take small valuables and the following important papers but travel light: Driver's license or other identification, bankbook/cards, insurance policies, property inventory and photos, device to convey special medical information. Shelter Managers will not be responsible for the storage of valuable items.

## WHEN YOU ARE LEAVING HOME

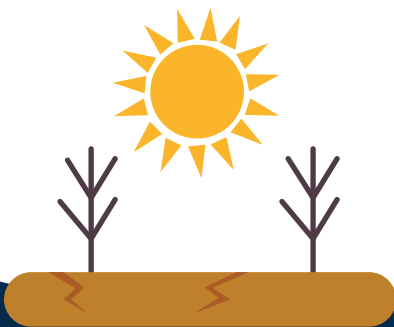
- Leave early, in daylight if possible.
- Avoid already flooded areas. Do not attempt to cross any stretch of floodwaters on foot if the water is above your knees.
- Do not drive where water is over roads. Under those floodwaters, the road could already be washed away. The rising waters could lift your car and carry it away... and no one could do anything to help you.
- Drive carefully; do not travel further than necessary. Roads may be jammed or blocked.
- Take extra precautions if you are told to evacuate at night. Darkness hides the flood dangers. If you suddenly find yourself driving through floodwaters and your car stalls, get out immediately and climb to higher ground. A stranded automobile could become a coffin.
- When you have found a safe refuge, stay put! Many people have lost their lives trying to go from one place to another.

## AT THE SHELTER

If you know that your home is not secure or safe to endure a hurricane or strong storm, or if the Department of Emergency Management (DEM) has advised that persons evacuate, go to the nearest Emergency Shelter.

For your health and comfort at the shelter, you should travel with the following items:

- Blanket
- Pillow
- Folding chair, lounge chair, cot or sleeping bag
- Flashlight, portable radio and batteries
- Medication
- Special foods (diet, baby food, etc)
- Diapers and other baby needs
- Extra clothing, shoes, eyes glasses etc.
- Books, playing cards, quiet games and toys for small children
- A 3 day supply of water and food
- Register each member of your family/group as soon as you enter the shelter. If conflicts arise between shelter occupants, the shelter manager will decide the course of action. Also remember that keeping the shelter facility clean and sanitary is EVERYONE'S responsibility.



## EMERGENCY SHELTER REGULATIONS

1. The Senior Warden is the supreme authority in the shelter and his/her decision is final.
2. The Emergency Shelter Warden or other Shelter Warden designated by the Senior Warden will be responsible for the Shelter in the absence of the Senior Shelter Warden.
3. The Warden is entitled to call upon any occupant of the Shelter to assist in its operation and every occupant is expected to cooperate to the best of his or her ability.
4. If a State of Emergency is proclaimed at any time under the Emergency Management Act 2006-20, all persons within the shelter will be subject to Orders made under the Act and will be liable for such penalties as may be imposed for failure to comply.
5. The Senior Warden and all assistants are forbidden to accept responsibility for any item of personal property of any occupant of the Shelter.
6. The Department of Emergency Management will NOT be liable for any damage to, or loss of, any property belonging to any occupant.
7. Any person who is seen defacing or in any way damaging the Shelter or any item of its furniture or equipment will be prosecuted.
8. Unseemly, indecent or unsocial behaviour such as the use of violence, profane language or drunkenness will not be tolerated and will result in prosecution where any such offence is contrary to the law.
9. No smoking of any kind will be allowed in an Emergency Shelter.
10. The consumption of alcohol or other alcoholic beverages is strictly forbidden in an Emergency Shelter.
11. No firearms will be allowed in an Emergency Shelter.
12. No offensive weapons will be allowed in an Emergency Shelter.

## THINGS TO DO AT THE START OF THE HURRICANE SEASON

- Check on these emergency items: water, boots, raincoats, flashlights and batteries, battery powered radio, battery-powered lamp, matches, hurricane shutters, etc.
- Clear all limbs and rotten tree branches.
- DO NOT attempt to cut branches or trees that may fall or have fallen on the wires.
- DO NOT pack refrigerator or freezer with lots of perishable foods.
- Have on hand simple First-Aid supplies.
- Stock up on 4-5 days' supply of food that does not need cooking or refrigeration.
- Open flame lamps and candles create a possible fire hazard. Use flashlights or battery powered lamps.
- Be sure you have adequate insurance coverage.
- Check your roof annually for loose screws or nails and damaged roof sheeting. Repair and replace as necessary.
- For your Business - take the necessary precautions. If a storm threatens, secure your building. Cover windows and cover and move equipment/furniture to a secure area. ALWAYS protect your data with backup files. If dependent on data processing, consider storage at an alternate site. Also, make provisions for alternate communications and power.

## WHAT TO DO WHEN A HURRICANE WATCH IS GIVEN

- Listen for weather updates on the local radio and television stations. Do not trust rumours, and stay tuned to the latest information.
- Check your disaster supplies kit. Obtain any needed items.
- Refill prescriptions. Maintain at least a two-week supply during the hurricane season.
- Clear yard of potential flying debris. E.g. patio furniture, potted plants, bicycles and trash cans.
- Clean containers for drinking water and bathtubs for storing clean water. Plan on three gallons per person, per day for all uses.
- Protect your windows and glass doors. If shutters have not been installed, you may also use pre-cut plywood. NOTE: tape does not prevent windows from breaking, so taping windows is not recommended.
- Fill your car's gas tank and check oil, water and tires. Remember that gas pumps do not operate without electricity.
- If you own a boat, secure it early.
- Owners of swimming pools should leave them filled and super chlorinated. (cover the filtration system)
- Get cash. Banks and ATMs will not be in operation without electricity and few stores will be able to accept credit cards, debit cards or personal checks.
- Always have some form of personal identification on your person – ID card, Driver's Licence or Passport.

## WHAT TO DO WHEN A HURRICANE WARNING IS GIVEN

- Listen to the advice of local officials, and leave your location if they tell you to do so.
- Complete preparation activities. Make sure your windows are protected and home secured.
- If you are not advised to evacuate, stay indoors, and away from windows.
- Have at least a two-week supply of non-perishable foods.
- During the storm, stay inside and away from windows, skylights and glass doors. Find a safe area in your home - an interior, reinforced room, closet or bathroom at ground level.
- Wait for official All Clear. Do not be fooled by the storm's calm "eye". The worst part of the hurricane occurs once the "eye" passes over and the winds blow from the opposite direction. Trees, shrubs, buildings and other objects damaged by the first winds can be further destroyed by the second winds.
- If you lose power, turn off major appliances to reduce the possibility of damage.
- Be alert for storm surges that may result in further damages to properties along coastal areas.
- If flooding threatens your home, turn off electricity at the main breaker.



## HOUSEHOLD DIASASTER KIT

These are a list of important items that one should stock up and replenish as necessary, especially at the beginning of the Hurricane Season (June 1st):

- Two weeks supply of prescription medications
- Two weeks supply of non-perishable/ special dietary foods
- Drinking water in containers: 1 gallon per person/per day for two weeks
- Water purification kit (tablets, bleach, chlorine[plain] and iodine)
- Flashlights and batteries for each member of the family
- Portable radio and batteries (7 sets)
- First Aid Book and Kit including bandages, antiseptic, tape, compresses, non-aspirin pain reliever, anti-diarrhoea medication
- Two coolers (one to keep food and one for ice)
- Plastic tarp for roof/window repair, screening, tools, nails, etc.
- Infant necessities (medicine, sterile water, diapers, ready formula, bottles)
- Clean-up supplies (mop, buckets, towels, disinfectant)
- Non-electric can opener
- Plastic trash bags
- Toilet paper, paper towels, hand sanitizer and pre-moisturized towelettes
- Fire extinguisher
- Complete set of clothes, shoes, gloves, rain gear
- Personal sanitary items
- Important documents (stored in water-tight plastic bags or plastic containers)

## WHAT TO DO WITH YOUR PETS

Pet owners are responsible for the protection of their pets during disaster events. If you plan to evacuate, plan for your pet as well. Pets are not allowed in public emergency shelters so it is advisable to make prior arrangements to shelter pets. If you go to friends or relatives, and if it is ok to take your pets; also take your Pet Survival Kit as well.

### **Pet Survival Kit**

- Proper ID collar/tag
- Carrier or cage
- Leash
- Ample food supply (at least two weeks) - moist food is recommended to preserve water
- Water/food bowls
- Any necessary medication/s

Plenty of newspaper for sanitary purposes

After the disaster event has passed, be careful in allowing your pets outside as familiar scents and landmarks may have been altered causing your pets to become confused and lost. Also, downed power lines, damaged buildings and animals and insects brought with the disaster could also present real dangers to your pet. Take care not to allow your pet to consume food or water which may have become contaminated.

## HURRICANE TERMS

**Tropical Wave:** A kink or bend in the normally straight flow or surface air in the tropics which forms low pressure trough, or pressure boundary and showers and thunderstorms. It can develop into a tropical cyclone.

**Tropical Depression:** A tropical cyclone with maximum sustained winds near the surface or less than 39 mph.

**Tropical Storm:** Tropical cyclone with winds of 39-74 mph.

**Tropical Storm Alert:** Tropical storm conditions (34-73 mph) are expected within 48 hours.

**Tropical Storm Watch:** Tropical storm conditions (34-73 mph) are expected within 36 hours.

**Tropical Storm Warning:** Tropical storm conditions (34-73 mph) are expected within 24 hours.

**Tropical Storm All Clear:** This means that the storm has left the area, but caution should prevail.

**Hurricane:** A tropical cyclone with winds of 74 mph or more. Normally it applies to such storms in the Atlantic Basin and the Pacific Ocean east of the International Date Line.

**Hurricane Alert:** Hurricane conditions are possible (winds are greater than 73 mph) within 48 hours.

**Hurricane Watch:** Hurricane conditions are possible and may threaten land within 36 hours.

**Hurricane Warning:** Hurricane conditions are expected to make landfall within 24 hours.

**Hurricane All Clear:** This means that the hurricane has left the area, but caution should prevail.

**Storm Surge:** The dome of water that builds up as a hurricane moves over water. As this water comes ashore with the storm, it causes flooding (usually a hurricane's biggest killer).

**Eye:** The low pressure centre of a hurricane. Winds are normally calm and sometimes the sky clears.

**Eye Wall:** This is the ring of thunderstorms that surrounds a hurricane's eye. The heaviest rain, strongest winds and worst turbulence are normally in the eye wall.

**Knot:** A measure of speed. To convert nautical miles or knots to miles per hour, multiply by 1.15. To convert miles to nautical miles or miles per hour to knots, divide by 1.15.

**Millibar:** A metric measurement of air pressure.

**Barometric Pressure:** The force exerted on a surface of unit area caused by the weight of the air column above, atmospheric pressure. It indicates the presence and movement of weather patterns and affects many physical measurements.

**North Atlantic Basin/Atlantic Basin:** The Atlantic Ocean north of the equator, the Caribbean Sea and the Gulf of Mexico.

